

Project Goal

Cambodian Temple

Client

Auckland Khmer Buddhist Association

Location

Porchester Road, Takanini, Papakura

Project Parameters

The Buddhist temple will be within a two hectare area and involves the development of a Ceremonial Hall, a Salar-Chun, a 12.6m high Vihara (Temple) and a Stupa, a 7m high monument.

This Temple will cater for the Khmer people of Auckland and can accommodate events for over 800 people. It will be a spiritual and cultural focal point for the Khmer people and provide a great amenity to the local community as a place for Buddhist teachings.

Extensive planning consultation was required as the application was notified with both the Regional Authority and Local District Council. The ARC had recommended that the application be declined due to the Metropolitan urban limit requirements. This 'rural' site is directly on the map line.

A successful hearing with no appeals will see this staged project grow over the next 15 years.

Services Provided

Involvement:

- The proposal required consent for the development of a Temple in the rural area of Takanini and the construction of the Vihaha and the 8.5m high gateway.
- Full civil engineering design to service the site.
- Car Park and roading design
- Full resource consent process
- Co ordination 14 separate consultants.

Project Period

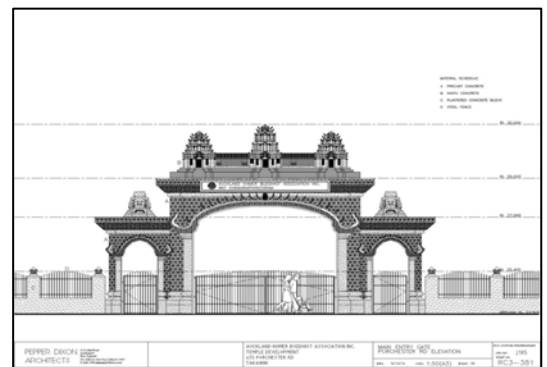
2004-2007

Project Budget

Staged over 15 years.

Works Budget

\$1 Million



Urban Limit

Site